



## Hypothesis for potential pathogenesis of SARS-CoV-2 infection—a review of immune changes in patients with viral pneumonia

Ling Lin, Lianfeng Lu, Wei Cao & Taisheng Li

To cite this article: Ling Lin, Lianfeng Lu, Wei Cao & Taisheng Li (2020): Hypothesis for potential pathogenesis of SARS-CoV-2 infection—a review of immune changes in patients with viral pneumonia, *Emerging Microbes & Infections*, DOI: [10.1080/22221751.2020.1746199](https://doi.org/10.1080/22221751.2020.1746199)

To link to this article: <https://doi.org/10.1080/22221751.2020.1746199>



© 2020 The Author(s). Published by Informa UK Limited, trading as Taylor & Francis Group, on behalf of Shanghai Shangyixun Cultural Communication Co., Ltd



Accepted author version posted online: 20 Mar 2020.



Submit your article to this journal [↗](#)



Article views: 7857



View related articles [↗](#)

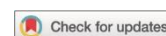


View Crossmark data [↗](#)

**Publisher:** Taylor & Francis & The Author(s). Published by Informa UK Limited, trading as Taylor & Francis Group, on behalf of Shanghai Shangyixun Cultural Communication Co., Ltd

**Journal:** *Emerging Microbes & Infections*

**DOI:** 10.1080/22221751.2020.1746199



**Hypothesis for potential pathogenesis of SARS-CoV-2 infection——a review of  
immune changes in patients with viral pneumonia**

Ling Lin, PhD<sup>1</sup>, Lianfeng Lu, PhD<sup>1</sup>, Wei Cao, M.D<sup>#1</sup>, Taisheng Li, M.D, PhD<sup>#1234</sup>

1 Department of Infectious Diseases, Peking Union Medical College Hospital, Peking Union Medical College, Chinese Academy of Medical Sciences, Beijing, China

2 Center for AIDS Research, Chinese Academy of Medical Sciences and Peking Union Medical College, Beijing, China

3 Immunology Center, Chinese Academy of Medical Sciences, Beijing, China

4 School of Medicine, Tsinghua University, Beijing, China

**# Correspondence to Taisheng Li :**

Department of Infectious Diseases, Peking Union Medical College Hospital, Peking Union Medical College, Chinese Academy of Medical Sciences

1# Shuai Fu Yuan, Beijing, China, 100730

Tel.: 86- 10-69155086; Fax: 86-10-69155046

Email: [litsh@263.net](mailto:litsh@263.net)

**# Correspondence to Wei Cao :**

Department of Infectious Diseases, Peking Union Medical College Hospital, Peking Union Medical College, Chinese Academy of Medical Sciences

1# Shuai Fu Yuan, Beijing, China, 100730

Tel.: 86- 10-69155086; Fax: 86-10-69155046

Email: [wcao\\_pumch@163.com](mailto:wcao_pumch@163.com)

**【Abstract】**

Coronavirus disease 2019 (COVID-19) is an infectious disease caused by severe acute respiratory syndrome coronavirus 2 (SARS-CoV-2) with droplets and contact as the main means of transmission. Since the first case appeared in Wuhan, China, in December 2019, the outbreak has gradually spread nationwide. Up to now, according to official data released by the Chinese health commission, the number of newly diagnosed patients has been declining, and the epidemic is gradually being controlled. Although most patients have mild symptoms and good prognosis after infection, some patients developed severe and die from multiple organ complications. The pathogenesis of SARS-CoV-2 infection in humans remains unclear. Immune function is a strong defense against invasive pathogens and there is currently no specific antiviral drug against the virus. This article reviews the immunological changes of coronaviruses like SARS, MERS and other viral pneumonia similar to SARS-CoV-2. Combined with the published literature, the potential pathogenesis of COVID-19 is inferred, and the treatment recommendations for giving high-doses intravenous immunoglobulin and low-molecular-weight heparin anticoagulant therapy to severe type patients are proposed.

**【key words】**

COVID-19, SARS-CoV-2, Anticoagulation, IVIg, Pathogenesis

Coronaviruses (CoVs) have been on the top news again after the severe acute respiratory syndrome coronavirus (SARS-CoV) in 2003[1] and Middle East Respiratory Syndrome(MERS-CoV) outbreak in Saudi Arabia and south korea[2], since a new Coronavirus occurred in Wuhan, Hubei province and quickly spread across over whole China and other 30 countries. Up to date (25 February 2020), there are approximately 80000 infectious patients confirmed and caused above 2500 death[3], which need urgent viral infection identification and intervention as early as possible. Although nucleic acid testing played an utmost part in the detection of the viral genome sequence[4], over-hypersensitivity and dependence on sampling may lead to some degree of false-positive or false-negative in the clinic. Despite several types of research have been conducted to practical treatments or any possible medicines, the consensus has not recommended any antiviral medicine[5]. It has been confirmed that the immune system played a vital role in defense against SARS-CoV and MERS infection. Immune changes in patients with SARS[6], MERS[7] and influenza[8], especially changes in peripheral blood T lymphocyte subsets, contribute to understanding the characteristics, diagnosis, monitoring, prevention and treatment of the disease.

### **Immune changes in SARS**

In the acute phase of SARS-CoV infection, rapid reduction of lymphocytes in peripheral blood[6], mainly T lymphocytes, was observed, and both CD4+ and CD8+ T lymphocytes were decreased. The loss of lymphocytes precedes even the abnormal changes on the chest X-ray[9,10]. After a one-year follow-up of SARS patients, CD3+, CD4+, and CD8+ T cells recovered rapidly during the disease recovery period. CD8+ T lymphocytes, which returned to normal within 2-3 months after onset. The memory CD4+ T cells returned to normal a year after onset, whereas other cell counts including total T lymphocytes, CD3+ cells, CD4+ cells, and naive CD4+ T cells were still lower than healthy controls[11]. It assumed that after a viral infection, lymphocytopenia in peripheral blood due to lymphocyte sequestration firstly. The increase in lymphocytes during recovery is not new cells produced by the thymus, but lymphocyte recirculation between peripheral blood and tissues or organs[11].

SARS-specific IgG antibodies are produced in the late acute stage about 2 weeks and gradually increase with the course of the disease[12]. The sustainable existence of IgG makes the patients acquire the immune function after infection. Recovering patients have high and sustained levels of S protein-specific neutralizing antibody responses, which may play an important role in determining disease outcome[13]. The IgG level of mild patients was significantly higher than that of severe patients. In the course of disease progression, patients may be accompanied by increased IL-8 and TNF- $\alpha$  levels, which peak in the early stage of recovery, while MCP-1 shows a rapid increase in the early acute stage and gradually decreases with the progress of the disease. Based on the above findings, it is proposed to treat the disease with a low-dose of glucocorticoid for less than 2 weeks in the early stage of the disease, so that the symptoms of most severe patients are well controlled[9]. This is different from the effect of high-dose of glucocorticoids described in other literature[14].

### **Immune changes in MERS**

A previously unknown coronavirus (MERS-CoV) which isolated from a patient in 2012[15] and caused high mortality rates in family-based and hospital-based outbreaks[2], was similar to severe acute respiratory syndrome coronavirus (SARS-CoV). The genomic structures of the two viruses are very similar, both single-stranded positive-sense RNA viruses, but when they enter host cells, MERS-CoV and SARS-CoV attach to different receptor dipeptidyl peptidase 4(DDP4) and angiotensin-converting enzyme 2 (ACE2) respectively[16,17]. Besides, the clinical manifestations of MERS-CoV infection, like SARS-CoV, range from asymptomatic infection to severe pneumonia with acute respiratory distress syndrome, septic shock, and multi-organ failure resulting in death[15]. Though the clinical pathogenesis have not been explained clearly, a retrospective study[7] comparing 45 patients in South Korea has suggested that a decreasing number of peripheral lymphocyte (lymphopenia as an absolute lymphocyte count lower than 1,000 cells/mm<sup>3</sup>), thrombocytopenia (platelet count lower than 150000 cells/mm<sup>3</sup>) and high CRP level could predict pneumonia development and progression to respiratory failure at the early course of the disease. This result is supported by evidence of the

report by Min et al[18]. Whereas it should be noteworthy that lymphopenia in MERS infection is not significant as SARS patients[19], and research found that except immunosuppression state and concomitant infection, age was the only predictor[20].

Concerning MERS-CoV T cell responses, within two weeks after the onset of symptoms (acute phase), besides pro-inflammatory cytokine/chemokine secretion, such as interleukin (IL)-6 and C-X-C motif chemokine (CXCL)-8[21,22], high frequencies of MERS-CoV-reactive CD8<sup>+</sup> T cells were observed in patients with severe/moderate illness, which before the detection of humoral and CD4<sup>+</sup> T cell responses. During the convalescent phase, the magnitude of the CD8<sup>+</sup> T cell response was not greatly augmented[22]. This result indicates that the inefficient control of invading MERS-CoV brings about robust inflammatory and CTL responses, which play a vital role in clearing the virus. Further, PBMCs obtained on day 24 after illness onset shows a strong specific T-cell response against the MERS-CoV S protein[23]. Role of cytotoxic T lymphocytes (CTL) protection from MHV(a member of the same beta coronavirus group as SARS-CoV and MERS-CoV) virus clearance also been demonstrated in animal experimental models[24].

Zhao, J et al[25] found that during the convalescent phase, neutralizing (PRNT50) antibody titers measured *in vitro* predicted serum protective ability in infected mice and correlated with CD4 but not CD8<sup>+</sup> T cell responses. And in their experiment, the CD4<sup>+</sup> T cells were phenotypically effector memory (CD45RA<sup>-</sup>CCR7<sup>-</sup>) cells, while the virus-specific CD8<sup>+</sup> T cell populations were half effector (CD45RA<sup>-</sup>CCR7<sup>-</sup>) cells and half CD45RA<sup>+</sup>CCR7<sup>-</sup> cells. Persistent and gradual increases of lymphocyte responses after symptom onset in MERS patients may be required for effective immune responses against MERS-CoV, but whether the CTL turnover and what the effect these cells provide still need further research.

### **Immune changes in influenza**

Different from the disappearance of MERS and SARS, the influenza pandemic (H1N1) in 2009 been incorporated into seasonal strains. However, the influenza pandemic (H1N1) has a relatively high mortality rate[26] compared to influenza A virus (IAV) and influenza B virus (IBV) which are usually covered in seasonal

strains[27]. The influenza genome contains 8 segments and is capable of both antigenic drift and shift, making small nucleotide mutations and the exchange of genome segments respectively. Due to these characteristics, novel antigens never existed in the human population to make seasonal epidemics possible.

The manifestation of H1N1 infections ranged from subclinical symptoms to significant malaise with fever, myalgias, and rhinorrhea, progressing to acute hypoxemia and acute respiratory distress. Extra-pulmonary presentations like gastrointestinal, neurologic and cardiac dysfunction, have also been described in the review[26]. Albeit pandemic 2009 H1N1 virus infection and host immunity patterns are incompletely characterized, in the early response period, increased plasma levels of IL-15, IL-8, and especially IL-6 may be markers of critical illness[28]. Another study[28] mapped 41 healthy volunteer T cell responses to influenza before and during infection and demonstrated that influenza-specific CD4<sup>+</sup> T cells correlate with disease protection against influenza challenge in humans. However, Kristin G.I. Mohn et al[8] stimulated PBMC during acute and convalescent patients, suggesting that significantly lower frequencies of influenza-specific CD8<sup>+</sup> compared with CD4<sup>+</sup> IFN- $\gamma$  T-cells in acute patients, while high levels of both CD4<sup>+</sup> and CD8<sup>+</sup> T cells directed against conserved core antigens in convalescent patients. Considering the lack of enough sample size and study design, whether there is a discrepancy of T lymphocyte subgroups dominance in different periods of infection should be explored further, but the CD4<sup>+</sup> T lymphocyte counts have been linked to disease severity[28, 29].

It is noteworthy that in the seasonal influenza infection, peripheral lymphocyte counts and lymphocyte subsets showed a significant correlation with prognosis of severe illness. Studies compared IAV or IBV patients with healthy subjects, elevated serum IL-6, IL-8 level and decreased CD3<sup>+</sup>CD4<sup>+</sup>, CD3<sup>+</sup>CD8<sup>+</sup>, NK counts related to patients infection[30,31].

As reviewed in this literature, the viruses of respiratory infections like SARS-CoV, MERS-CoV and influenza virus all caused periodical outbreak and death. Histopathological examinations show common characteristics: diffuse alveolar

damage, edematous lung lesions and pneumonia[32-34]. Besides, the examination of virus infection demonstrates that the capability of virus replication efficiently in the upper and lower respiratory tract is associated with mild or moderate clinical signs and pathological changes[33-35], though only in the MERS-CoV infected rhesus macaque could detect transient lymphocyte cell reduction in the first 2 days after inoculation[33]. Jiang Gu et al[36] hypothesized that the marked T lymphocytes (CD3+, CD4+, and CD8+ cells) decline weakened immune system and aggravated the SARS infection of the respiratory tract. In summary, virus replication, distribution and associated immune response contributed to the progress of the infectious disease. The change of peripheral lymphocyte change and the transition of lymphocyte subgroups may provide new thoughts for the pathogenesis of SARS-CoV-2 infection.

### **Hypothetical pathogenesis**

Based on the published literature and clinical observations of COVID-19 patients, we propose reasonable hypotheses about the pathogenesis of SARS-CoV-2 infection in humans. The virus might pass through the mucous membranes, especially nasal and larynx mucosa, then enters the lungs through the respiratory tract. The early most common symptoms of infection are fever and cough[37]. The virus may enter the peripheral blood from the lungs, causing viremia. Then the virus would attack the targeting organs that express ACE2, such as the lungs, heart, renal, gastrointestinal tract[38,39]. The SARS-CoV-2 detected in the fecal samples[37] is more likely because the virus enters the blood from the lungs and then travels from the blood to the intestines, which supports our hypothesis. Dawei Wang et al found that the median time from symptom onset to ARDS was about 8 days[40]. We speculate that in this way, the virus begins a second attack, causing the patient's condition to aggravate around 7 to 14 days after onset. During the infection process, the white blood cell count in peripheral blood in the early stage of the disease is normal or slightly low[37], and lymphopenia is observed in patients[40]. We speculate that B lymphocyte reduction may occur early in the disease, which may affect antibody production in the patient. In severe type patients, lymphocytes were significantly reduced[40]. We speculate that lymphocytes in patients with COVID-19 might



gradually decrease as the disease progress. But the mechanism of significant lymphocyte reduction in severe type patients remains unclear. Besides, the inflammatory factors associated with diseases mainly containing IL-6[41] were significantly increased, which also contributed to the aggravation of the disease around 7 to 14 days after onset. Non-survivors had higher levels of neutrophils, D-Dimer, blood urea nitrogen, and creatinine than the survivors[40].

Based on the above assumptions, the clinical phase is divided into three: the viremia phase, the acute phase (pneumonia phase) and the recovery phase. If the immune function of patients in the acute phase (pneumonia phase) is effective, and no more basic diseases, the virus can be effectively suppressed, then enter the recovery phase. If the patient is older, or in an immune impaired state, combined with other basic diseases such as hypertension and diabetes, the immune system cannot effectively control the virus in the acute phase (pneumonia phase), the patient will become severe or critical type. As we mentioned in our hypothesis, T cells, B cells were further reduced, while inflammatory cytokines and D-Dimer continued to increase in severe type patients(Fig.1A). To enhance the immune function of patients and inhibit the formation of inflammatory factor storms, we proposed the following two therapeutic measures.

COVID-19 does not have specific antiviral drug treatment currently, so the treatment of the disease is mainly focused on symptomatic treatment and oxygen therapy. Inflammatory factors and lymphocyte subsets are recommended to be monitored during the disease. We suggest that IVIg and low molecular weight heparin (LMWH) anticoagulant therapy could be given as early as possible when T cells, B cells, inflammatory cytokines, and D-Dimer show the following trends: T lymphocytes and B lymphocytes in peripheral blood are significantly lower than before; inflammatory cytokines such as IL-6 are increased significantly; coagulation parameters such as D-Dimer increased abnormally; Chest CT indicates the expansion of lung lesions. In our recommendation, high-dose IVIg at 0.3-0.5g per kg weight per day could be given for 5 days, which can interrupt the storm of inflammatory factors at an early stage, enhance immune function. A randomized controlled clinical trial of

IVIg in patients with severe SARS-CoV-2 infection has been initiated (NCT 04261426). Although IVIG has shown efficacy in the treatment of patients with influenza[42] and SARS[43], we need more clinical data of COVID-19 patients as evidence.

LMWH anticoagulation therapy is especially recommended in the early stage of the disease. Infection is a common cause of disseminated intravascular coagulation. Inflammation, infection and other factors can lead to excessive activation of coagulation. We have observed in clinical that COVID-19 patients with severe type may develop disseminated intravascular coagulation (DIC) (unpublished data). In COVID-19 patients with severe type, ischemic changes may occur in the fingers and toes (Figure.2). Anticoagulation therapy is recommended for COVID-19 patients when the D-Dimer value is 4 times higher than the normal upper limit, except for patients with anticoagulant contraindications. The recommended dose of LMWH is 100U per kg weight per 12 hours by subcutaneous injection for 3-5 days. Clinicians should closely monitor the indicators of laboratory examination of patients to be alert for side effects after anticoagulant treatment.

In conclusion, the current treatment of COVID-19 patients with severe type and critical type is the key to controlling the rising number of deaths. We recommend early initiation of IVIg and LMWH anticoagulant therapy, which is effective in improving the prognosis of severe and critical type patients. Fig 1B describes the optimal time to initiate IVIg and LMWH anticoagulant therapy, as well as the possible trend of T cells, B cells, Inflammatory cytokines, D-Dimer after therapy. More immune-related research is needed to help us understand the pathogenesis, guide the treatment of the disease, and improve the prognosis.

#### **Acknowledgments**

Ling Lin and Lianfeng Lu drafted the manuscript; Wei Cao and Taisheng Li contributed to hypothetical pathogenesis; all authors provided critical review of the manuscript and approved the final draft for publication.

#### **Disclosure statement**

No potential conflict of interest was reported by the author(s).

## References

- [1] Zhong N, Zheng B, Li Y, et al. Epidemiology and cause of severe acute respiratory syndrome (SARS) in Guangdong, People's Republic of China, in February, 2003. *Lancet*. 2003; 362 (9393): 1353-1358.
- [2] World Health Organization: health topics [Internet]. WHO [cited 2020 Feb 26]. Available from:  
<http://www.emro.who.int/health-topics/>
- [3] World Health Organization: emergencies[Internet] WHO [updated 2020 Feb 25, cited 2020 Feb 26]. Available from:  
[https://www.who.int/docs/default-source/coronaviruse/situation-reports/20200225-sitrep-36-covid-19.pdf?sfvrsn=2791b4e0\\_2](https://www.who.int/docs/default-source/coronaviruse/situation-reports/20200225-sitrep-36-covid-19.pdf?sfvrsn=2791b4e0_2)
- [4] Yu F, Du L, Ojcius D M, et al. Measures for diagnosing and treating infections by a novel coronavirus responsible for a pneumonia outbreak originating in Wuhan, China[J]. *Microbes Infect*.2020; undefined: undefined.
- [5] National Health Commission: Diagnosis and treatment of pneumonia infected by novel coronavirus (trial Fifth Edition) CHINA [updated 2020 Feb 05, cited 2020 Feb 26] Available from:  
<http://www.nhc.gov.cn/yzygj/s7653p/202002/3b09b894ac9b4204a79db5b8912d4440.shtml>
- [6] Taisheng L, Zhifeng Q, Linqi Z, et al. Significant Changes of Peripheral T Lymphocyte Subsets in Patients with Severe Acute Respiratory Syndrome[J]. *The Journal of Infectious Diseases*. 2004;189(4):648-651.
- [7] Ko J H, Park G E, Lee J Y, et al. Predictive factors for pneumonia development and progression to respiratory failure in MERS-CoV infected patients [J]. *Journal of Infection*. 2016;73, 468-475.
- [8] Mohn K G, Cox R J, Tunheim G, et al. Immune Responses in Acute and Convalescent Patients with Mild, Moderate and Severe Disease during the 2009 Influenza Pandemic in Norway[J]. *PLoS One*.2015;10(11): e0143281.
- [9] Liu Z Y, Li T S, Wang Z, et al. [Clinical features and therapy of 106 cases of severe acute respiratory syndrome]. *Chinese Journal of Internal Medicine*. 2003;(06): 16-20. Chinese
- [10] Li T S, Qiu Z F, Han Y, et al. [The alterations of T cell subsets of severe acute respiratory syndrome during acute phase]. *Chinese Journal of Laboratory Medicine*. 2003;(05): 40-42. Chinese
- [11] Xie J , Fan H W , Li T S , et al. [Dynamic changes of T lymphocyte subsets in the long-term follow-up of severe acute respiratory syndrome patients]. *Chinese Academy of Medical Science*. 2006;28(2):253-255.Chinese
- [12] Li Gang, Chen M J, Chen W, et al. [Variation in the titer of the specific IgG antibody in patients with SARS]. *Journal of Tropical Medicine*. 2003;(03): 283-285. Chinese
- [13] Cao Z, Liu L, Du L, et al. Potent and persistent antibody responses against the receptor-binding domain of SARS-CoV spike protein in recovered patients. *Virology Journal*. 2010;(07): 299.
- [14] Stockman L J, Bellamy R, Garner P. SARS: Systematic Review of Treatment

Effects. *Plos Medicine*. 2006; 3(9):e343.

[15] Zaki AM, van Boheemen S, Bestebroer T M, et al. Isolation of a novel coronavirus from a man with pneumonia in Saudi Arabia. *The New England Journal of Medicine*.2012;367(19):1814-1820.

[16] Raj V S, Mou H, Smits S L, et al. Dipeptidyl peptidase 4 is a functional receptor for the emerging human coronavirus-EMC. *Nature*.2013;495(7440): 251-254.

[17] Li W, Moore M J, Vasilieva N, et al. Angiotensin-converting enzyme 2 is a functional receptor for the SARS coronavirus. *Nature*.2003;426(6965): 450-454.

[18] Min C K, Cheon S, Ha N Y, et al. Comparative and kinetic analysis of viral shedding and immunological responses in MERS patients representing a broad spectrum of disease severity. *Scientific Reports*.2016; 6: 25359.

[19] Zumla A, Hui D S, Perlman S. Middle East respiratory syndrome[J]. *Lancet*. 2014; 40(7):995-1007.

[20] Saad M, Omrani A S, Baig K, et al. Clinical aspects and outcomes of 70 patients with Middle East respiratory syndrome coronavirus infection: a single-center experience in Saudi Arabia[J]. *International Journal of Infectious Diseases*. 2014; 29:301-306.

[21] Alosaimi B, Hamed M E, Naeem A, et al. MERS-CoV infection is associated with downregulation of genes encoding Th1 and Th2 cytokines/chemokines and elevated inflammatory innate immune response in the lower respiratory tract. *Cytokine*. 2020;126:154895.

[22] Shin H S, Kim Y, Kim G, et al. Immune Responses to Middle East Respiratory Syndrome Coronavirus During the Acute and Convalescent Phases of Human Infection[J]. *Clinical Infectious Diseases*. 2019; 68: 984-992.

[23] Wen D G, Pun M C K, Lin C Z, et al. Characteristics of Traveler with Middle East Respiratory Syndrome, China, 2015[J]. *Emerging Infectious Diseases*. 2015;21(12):2278-2280.

[24] Stohlman S A, Bergmann C C, Veen R C V D, et al. Mouse hepatitis virus-specific cytotoxic T lymphocytes protect from lethal infection without eliminating virus from the central nervous system[J]. *Journal of Virology*. 1995; 69(2):684-694.

[25] Zhao J, Alshukairi A N, Baharoon S A, et al. Recovery from the Middle East respiratory syndrome is associated with antibody and T-cell responses[J]. *Science Immunology*. 2017;2(14): undefined.

[26] Bautista E, Chotpitayasunondh T, Gao Z C, et al. Clinical aspects of pandemic 2009 influenza A (H1N1) virus infection[J]. *The New England Journal of Medicine*.2010;362(18):1708-1719.

[27] World Health Organization: newsroom [Internet]. WHO [cited 2020 Feb 26]. Available from:

[https://www.who.int/en/news-room/fact-sheets/detail/influenza-\(seasonal\)](https://www.who.int/en/news-room/fact-sheets/detail/influenza-(seasonal)).

[28] Bermejo-Martin J F, Lejarazu R O D, Tomas Pumarola, et al. Th1 and Th17 hypercytokinemia as early host response signature in severe pandemic influenza[J]. *Critical Care*. 2009;13(6): R201.

[29] Wilkinson TM, Li CK, Chui CS, et al. Preexisting influenza-specific CD4+ T

cells correlate with disease protection against influenza challenge in humans. *Nat Med*. 2012;18(2):274-80. doi:10.1038/nm.2612.

[30] Geng T R, Han Y, Li T S, et al. [Characteristics and prognostic value of peripheral blood T lymphocyte subsets in patients with severe influenza]. *Chinese Journal of Internal Medicine*. 2020;59(3): undefined. Chinese

[31] Juarez-Reyes A, Noyola D E, Monsivais-Urenda A, et al. Influenza Virus Infection but Not H1N1 Influenza Virus Immunization Is Associated with Changes in Peripheral Blood NK Cell Subset Levels[J]. *Clinical and Vaccine Immunology*. 2013;20(8):1291-1297.

[32] Shieh W J, Blau D M, Denison A M, et al. 2009 Pandemic Influenza A (H1N1): Pathology and Pathogenesis of 100 Fatal Cases in the United States[J]. *American Journal of Pathology*. 2010;177(1):0-175.

[33] de Wit E, Rasmussen A L, Falzarano D, et al. Middle East respiratory syndrome coronavirus (MERS-CoV) causes transient lower respiratory tract infection in rhesus macaques[J]. *Proceedings of the National Academy of Sciences*. 2013; 110(41):16598-16603.

[34] Munster VJ, de Wit E, van den Brand JM, et al. Pathogenesis and Transmission of Swine-Origin 2009 A(H1N1) Influenza Virus in Ferrets[J]. *Science*. 2009;325(5939):481-483.

[35] Mcauliffe J, Vogel L, Roberts A, et al. Replication of SARS coronavirus administered into the respiratory tract of African Green, rhesus and cynomolgus monkeys[J]. *Virology*. 2004;330(1):8-15.

[36] Gu J, Gong E, Zhang B, et al. Multiple organ infection and the pathogenesis of SARS[J]. *Journal of Experimental Medicine*. 2005; 202(3):415-424.

[37] Guan W J, Ni Z Y, Hu Y, et al. Clinical characteristics of 2019 novel coronavirus infection in China. *N Engl J Med*. 2020; undefined: undefined. doi: 10.1056/NEJMoa2002032.

[38] Dan H, Maureen G, Richard B, et al. Quantitative mRNA expression profiling of ACE 2, a novel homologue of angiotensin converting enzyme.FEBS. 2002; undefined: undefined. doi: undefined.

[39] Letko M, Marzi A, Munster V. Functional assessment of cell entry and receptor usage for SARS-CoV-2 and other lineage B betacoronaviruses. *Nat Microbiol*. 2020; undefined: undefined. doi:10.1038/s41564-020-0688-y.

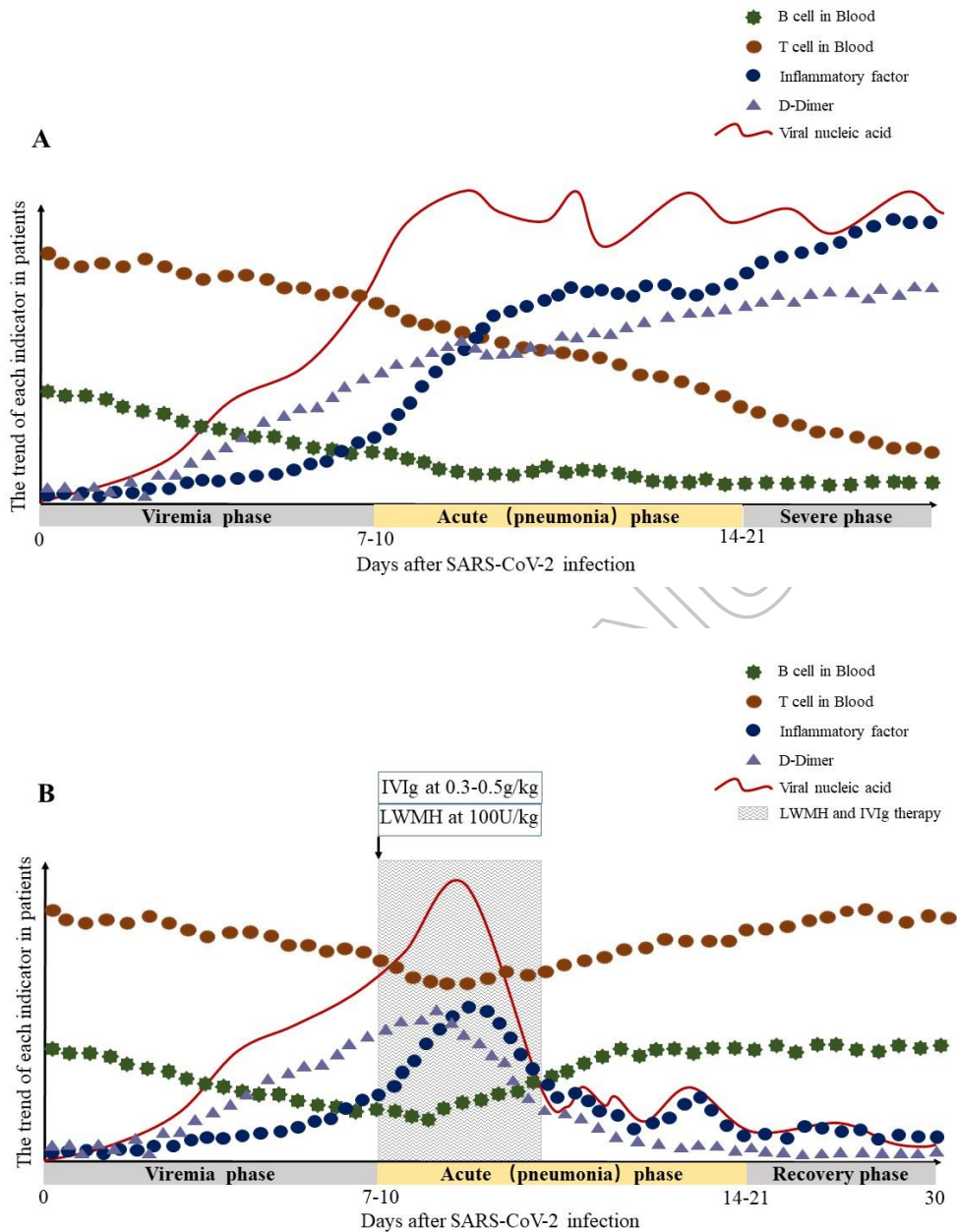
[40] Wang D, Hu B , Hu C, et al. Clinical Characteristics of 138 Hospitalized Patients With 2019 Novel Coronavirus-Infected Pneumonia in Wuhan, China [J]. *JAMA*. 2020; undefined: undefined.

[41] Wan S X, Yi Q J, Fan S B, et al. Characteristics of lymphocyte subsets and cytokines in peripheral blood of 123 hospitalized patients with 2019 novel coronavirus pneumonia (NCP). *medRxiv*. 2020; undefined: undefined. doi: <https://doi.org/10.1101/2020.02.10.20021832>

[42] Liu Q, Zhou Y H, Yang Z Q. The cytokine storm of severe influenza and development of immunomodulatory therapy. *Cellular and Molecular Immunology*. 2016; 13(1):3-10.

[43] Ho J, Wu A, Lam B, et al. Pentaglobin in steroid-resistant severe acute

respiratory syndrome. *Int J Tuberc Lung Dis.* 2004; 8(10):1173-1179.



**Figure.1** Hypothetical pathogenesis of COVID-19. The X-axis is the number of days after SARS-CoV-2 infection, and it is divided into three phases according to the above conjecture. The Y-axis is the trend of T cells, B cells, inflammatory factors, D-Dimer and viral load in patients. (A) The trend of each indicator in COVID-19 patients with severe type; (B) The trend of each indicator in COVID-19 patients with severe type after LWMH and IVIg therapy. The shaded areas represent the recommended intervention times for LWMH and IVIg treatment.



**Figure.2** Ischemic changes of toes in one COVID-19 patient with severe type.

ACCEPTED MANUSCRIPT